

# PROJECT REPORT

(Submitted for the Degree of B.com Honours. In Accounting & Finance under  
University of Calcutta)

---

TITLE OF THE PROJECT

---

## DATABASE MANAGEMENT SYSTEM (EMPLOYEE SALARY SHEET)

---

SUBMITTED BY

---

**Name of the Candidate: MD SAAD ALAM ANSARI**

**CU Registration Number: 144-1111-0729-20**

**CU Roll no: 201144-21-0175**

**College Roll No: BH0286**

---

SUPERVISED BY

---

- DEBASHIS BISWAS
- DIPIKA DAS

---

*Name of the college*

---

**Bangabasi Morning College**

Year of submission:2023

Annexure: 1

## Supervisor's Certificate

This is to certify **MD SAAD ALAM ANSARI** student of B.com Honors in Accounting & finance of **BANGABASI MORNING COLLEGE** under the University of Calcutta has worked under my supervision and guidance for the project work and prepared a project report with the title **MS ACCESS** which he is submitting. His genuine and original work to the best of my knowledge

PLACE: KOLKATA

Date:

Signature-----

Name:MD SAAD ALAM ANSARI,

Designation Supervisor & guide

DEBASHIS BISWAS

&

DIPIKA DAS

**Name of the college:** Bangabasi Morning College.

Annexure: 2

## Student's Declaration

I hereby declare that the project works **MS Access** submitted by me for the partial fulfillment of the degree of B.com Honors in Accounting & finance under the University of Calcutta is my original work and has not been submitted earlier to any other university Institute for the fulfillment of the requirement for any other course of study I also declare that no chapter to this manuscript in whole or in part has been incorporated in this report from any earlier work done by others or by ma However, extracts of any literature which has been used for this report has been duly acknowledge providing details of such literature in the reference.

PLACE:-

DATE:

Signature: -----

Name: MD SAAD ALAM ANSAARI

Address: **133/1 S.N Banerjee road ,  
KOLKATA - 700013**

Name of College: Bangabasi Morning College.

CU. Reg. No.: 144-1111-0729-20

CU. Roll No :201144-21-0175

College Roll No.: BH0286

SL. NO.	<b>TOPICS</b>	PAGE NO.
1	INTRODUCTION	5
2	ADVANTAGES & DISADVANTAGES OF MS ACCESS	6-7
3	PROJECT WORK-1 DATABASE MANAGEMENT SYSTEM EMPLOYEE-SALARY SHEET	8-13
4	PROJECT WORK 2	14
5	Using MS Access to Create a Database	15-20
6	BIBLIOGRAPHY	21

# INTRODUCTION

**Microsoft Access** is a database management system (DBMS) from Microsoft that combines the relational Access Database Engine (ACE) with a graphical user interface and software-development tools. It is a member of the Microsoft 365 suite of applications, included in the Professional and higher editions or sold separately.

Microsoft Access stores data in its own format based on the Access Database Engine (formerly Jet Database Engine). It can also import or link directly to data stored in other applications and databases.

Software developers, data architects and power users can use Microsoft Access to develop application software. Like other Microsoft Office applications, Access is supported by Visual Basic for Applications (VBA), an object-based programming language that can reference a variety of objects including the legacy DAO (Data Access Objects), ActiveX Data Objects, and many other ActiveX components. Visual objects used in forms and reports expose their methods and properties in the VBA programming environment, and VBA code modules may declare and call Windows operating system operations.

# ADVANTAGES & DISADVANTAGES OF MS ACCESS

## Advantage of MS Access

Microsoft Access is a powerful database management system that offers several advantages, including:

**Easy to use:** Access has a user-friendly interface that allows even non-technical users to create and manage databases easily.

**Cost-effective:** Access is included in most Microsoft Office suites, making it a cost-effective option for small businesses and individuals.

**Customizable:** Access allows you to customize your database to suit your specific needs. You can create custom forms, reports, and queries, and even write code to automate tasks.

**Integration:** Access integrates seamlessly with other Microsoft Office applications, such as Excel and Word, making it easy to share data between applications.

**Scalability:** Access can handle databases of various sizes, from small personal databases to large enterprise-level databases.

**Security:** Access provides a range of security features, including user-level security, password protection, and encryption, to ensure that your data is secure.

## Disadvantages of Ms access

While Microsoft Access has many advantages, it also has some limitations and disadvantages that users should be aware of. Here are some of the main disadvantages of Microsoft Access:

**Limited Capacity:** Access has a limited capacity to handle large amounts of data. While it can handle up to 2 GB of data, this is a relatively small amount compared to other database management systems.

**Security Concerns:** While Access provides some security features, it may not be suitable for highly sensitive data. Access databases can be prone to hacking, and there have been several reported security vulnerabilities in the past.

**Multi-User Issues:** Access may not be the best choice for databases that need to be accessed by multiple users simultaneously. Access can become slow and unstable when multiple users are accessing the same database at the same time.

**Limited Scalability:** Access is not a scalable solution for very large databases, and users may need to migrate to a more powerful database management system as their data needs grow.

**Limited Automation:** While Access does provide automation capabilities, it may not be suitable for complex automation tasks. Users may need to use Visual Basic for Applications (VBA) or other programming languages to achieve more advanced automation.

# **DATABASE MANAGEMENT SYSTEM**

## **EMPLOYEE-SALARY SHEET**

### **PROJECT WORK-1**

Create Ms Access Database Software to Prepare Salary in Your Company

I'll give you the brief instruction to create a Payroll system using MS access for generate monthly salaries and print salary slips easily with this. You can print pay sheets for individual employers and salary details also. No need to install special software, no need special Skill but you need Ms Access in your computer. This way you can keep each month salary details records under database and can edit or review later.

### **Instructions**

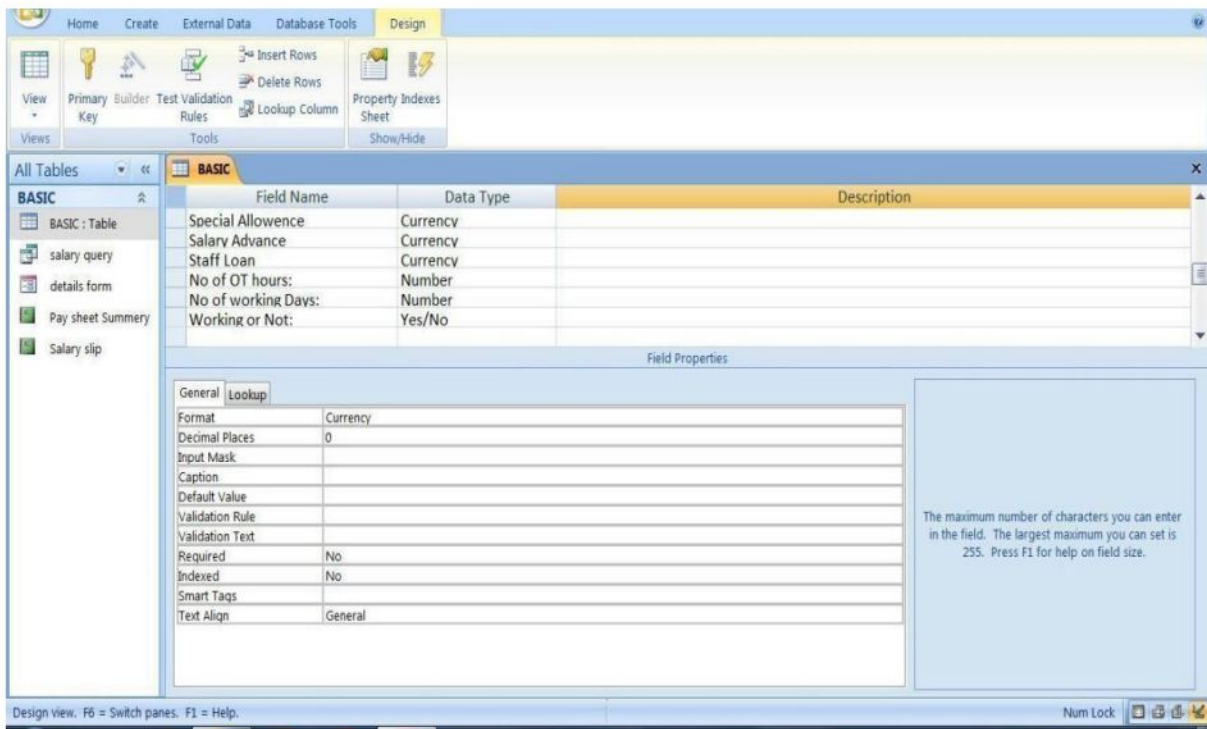
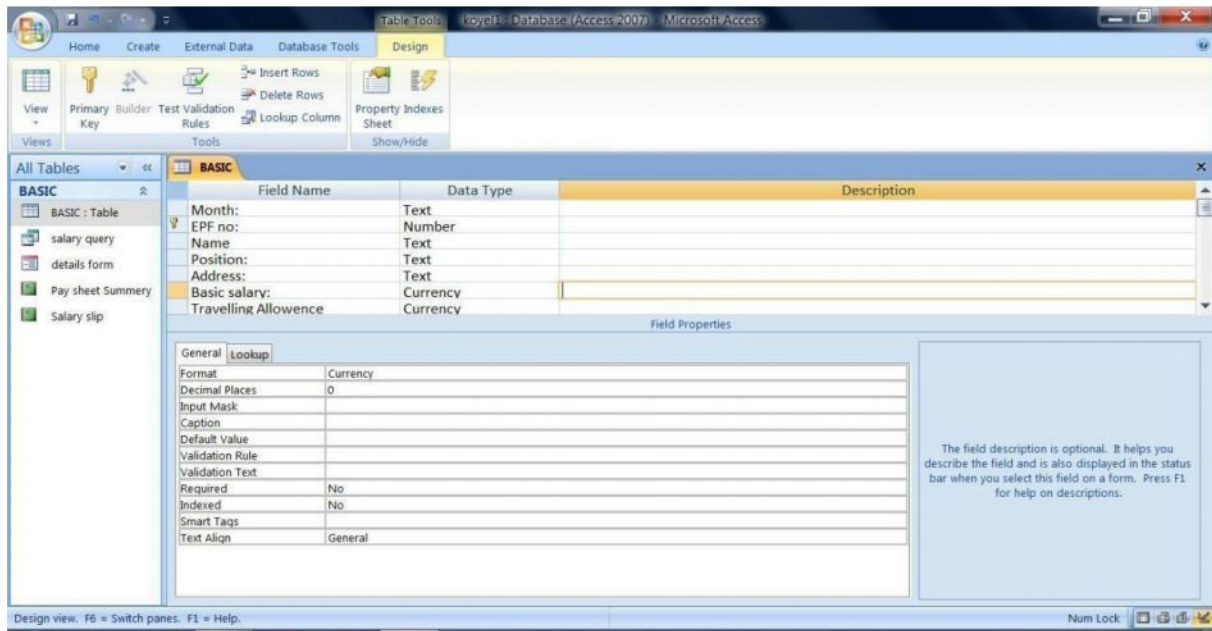
Step 1:

#### **❖ Create Main Basic Table**

- Open Ms Access.
- Go to main menu & create table as mention with picture.
- Add following details or your details what you pay to your staff monthly. (Image in Fig.1&2)

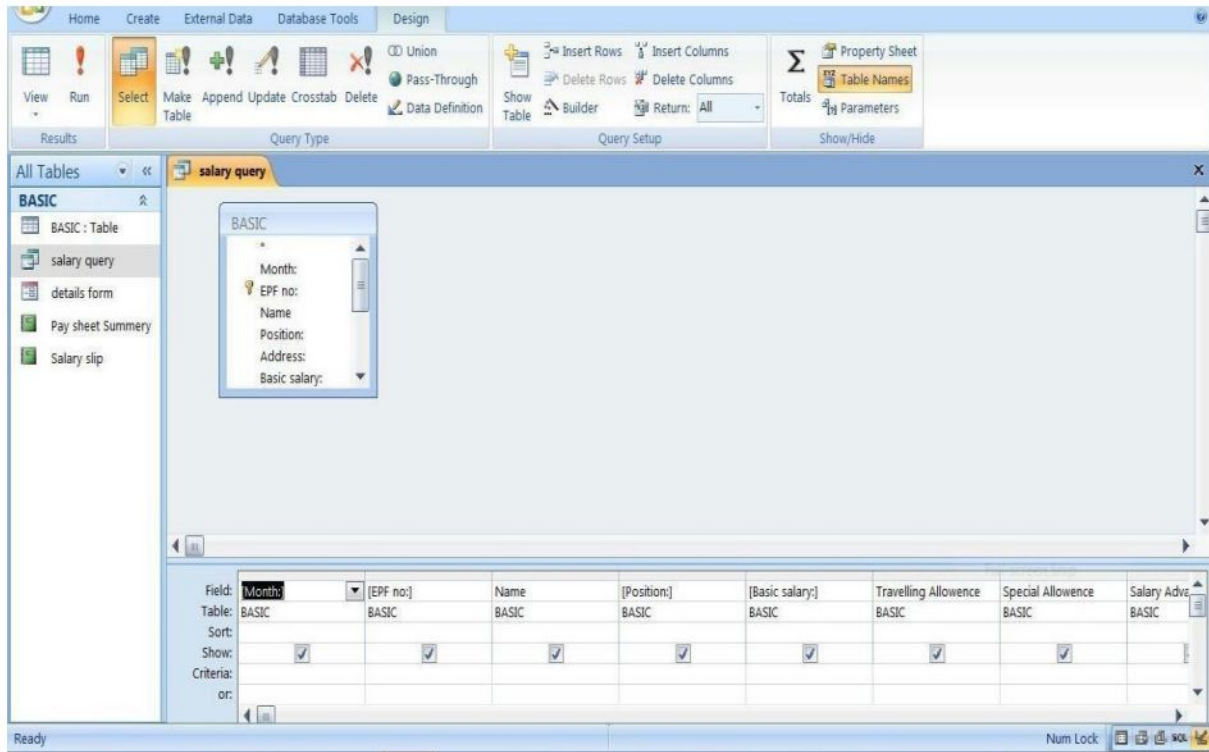


• Create Ms Access Database Software to Prepare Salary in Your Company:



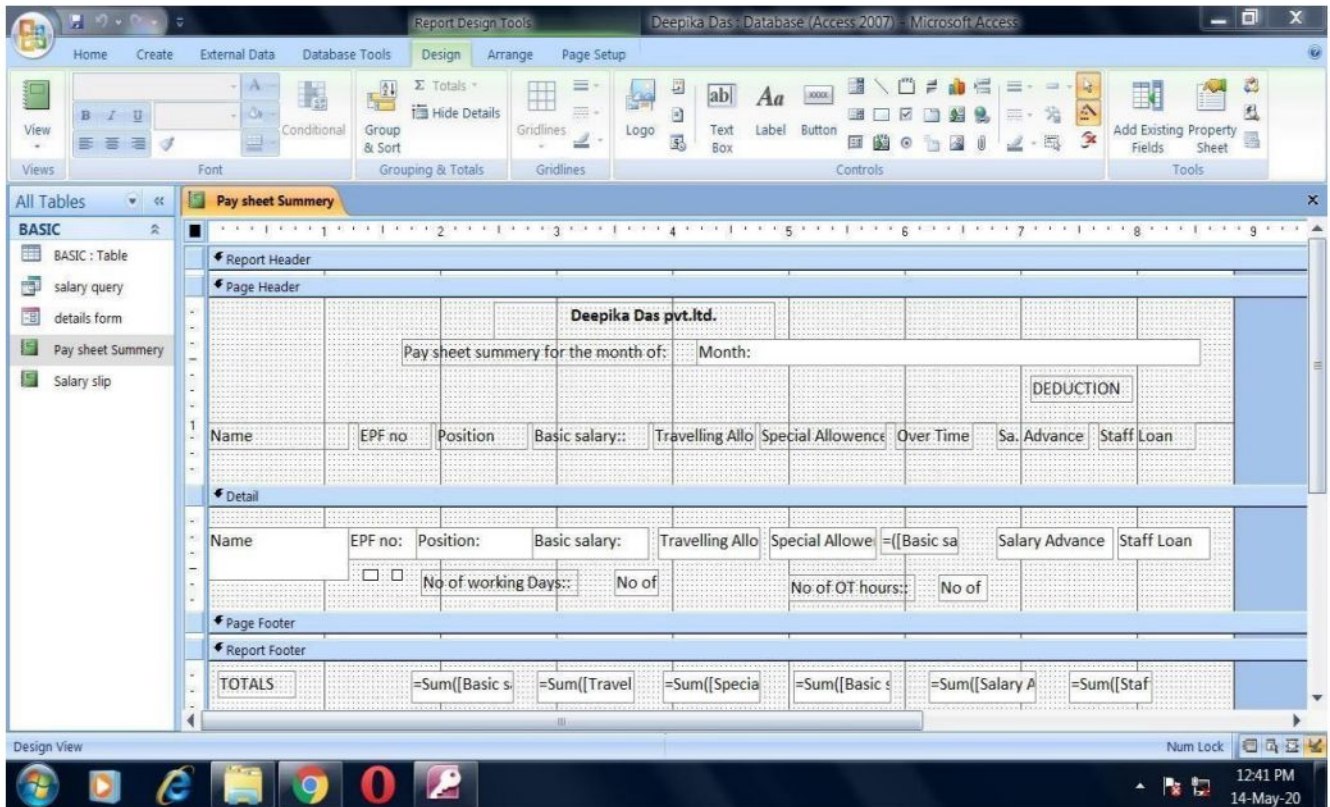
## Step 2:

- Create Query for Basic Main Table
- Create a Query for basic main data table. (Image in Fig.3)



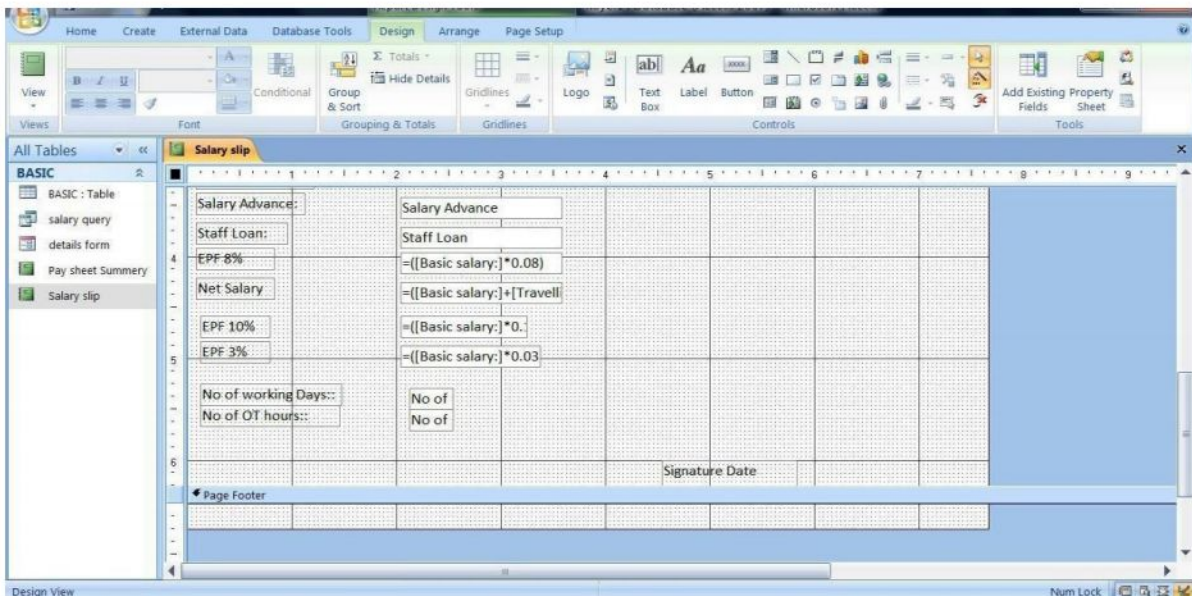
## Step 3:

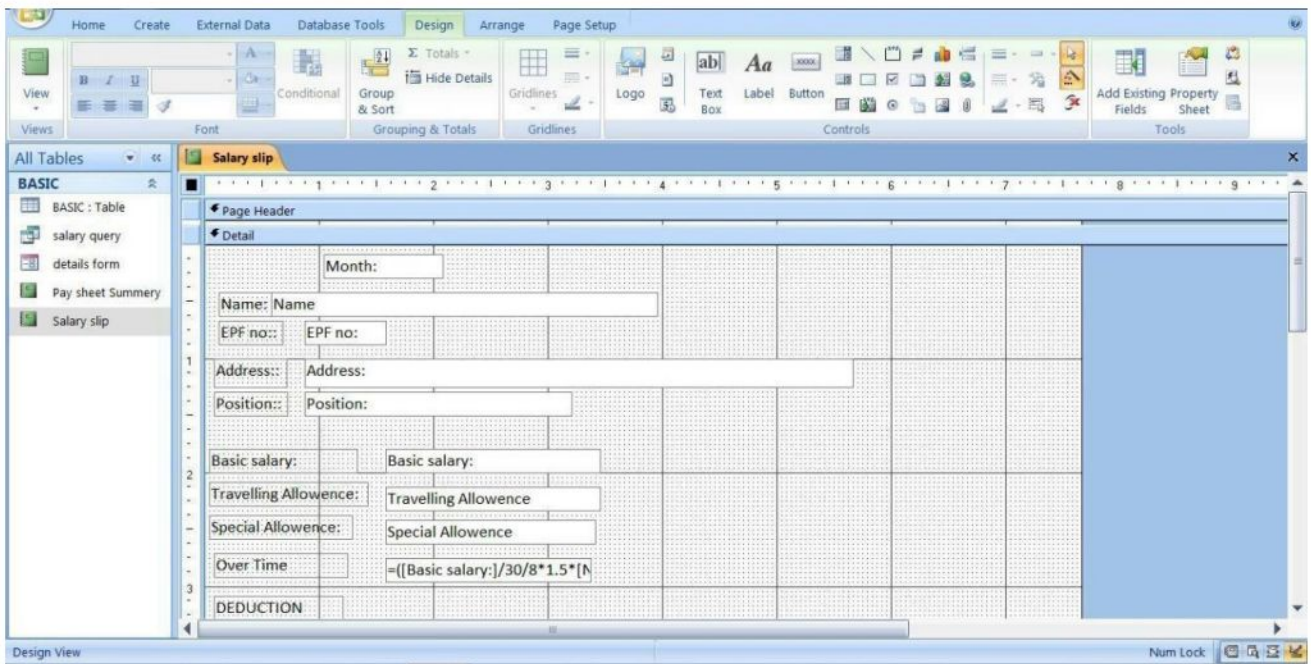
- Create Pay Sheet Details
- Create a report base on monthly transaction for pay sheet.
- insert formula for auto calculate OT / No pay/ and net salary
- follow the image below (Image in Fig.4)



#### Step 4:

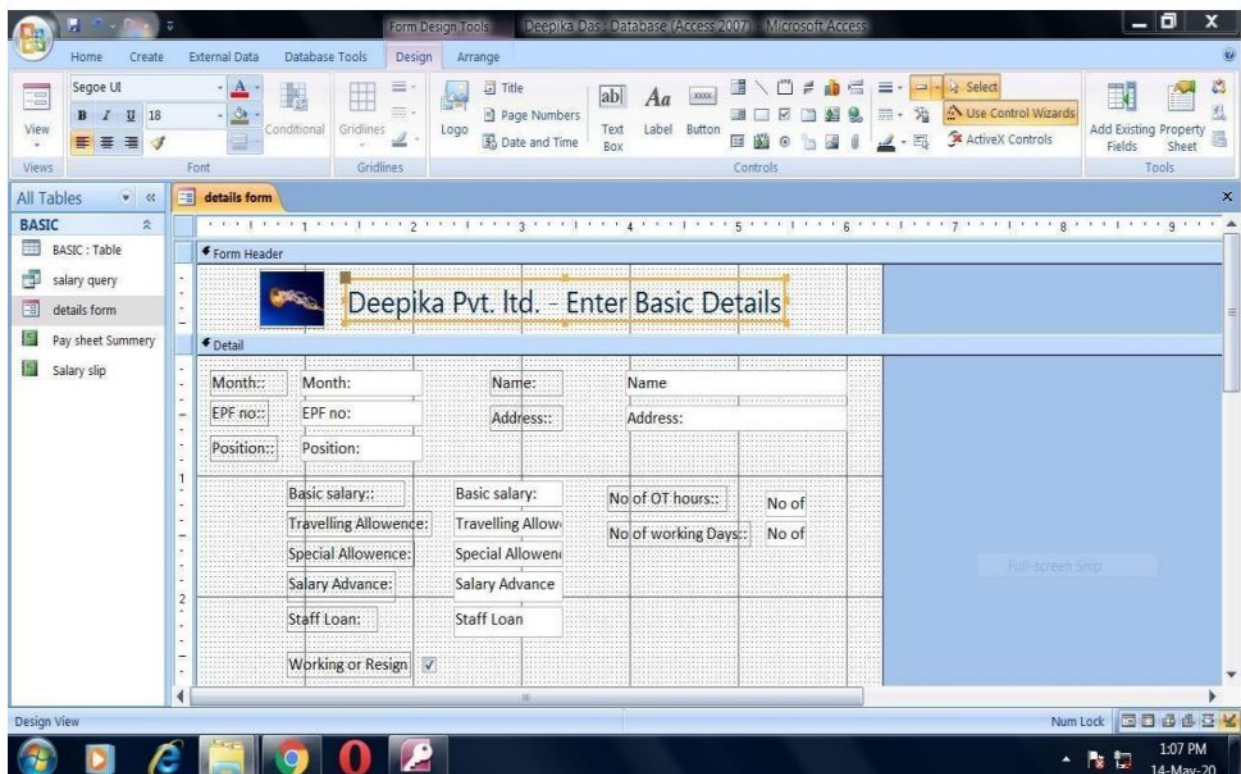
- Create a Salary Slip.
- Create a salary Slip how you want to give to your staff as below.
- Each and every details what you want to show in your staff salary slip. (Image in Fig.5&6)





## Step 5: Create a Form to Enter Data

- Now create a form to enter data to your program.
- Base on your table crate a form to enter data very easily



## Enter Staff Details

- Now you are already finish your program.
- Enter staff details.

The screenshot displays the Microsoft Access interface for a database named 'Deepika Das - Database (Access 2007)'. The ribbon includes 'Home', 'Create', 'External Data', and 'Database Tools'. The 'All Tables' pane on the left shows a list of tables: 'BASIC : Table', 'salary query', 'details form', 'Pay sheet Summary', and 'Salary slip'. The 'details form' is currently open in 'Form View'. The form title is 'Deepika Pvt. Ltd. - Enter Basic Details'. It contains the following fields and controls:

- Month::
- Name:
- EPF no::
- Address::
- Position::
- Basic salary::
- No of OT hours:
- Travelling Allowance:
- No of working Days::
- Special Allowance:
- Salary Advance:
- Staff Loan:
- Working or Resign
- If resign tick this

At the bottom of the form, there is a status bar showing 'Record: 11 of 11', 'No Filter', and a search box. The Windows taskbar at the bottom shows the system clock as 1:08 PM on 14-May-20.



# Using MS Access to Create a Database

❖ In this assignment, you are required to create a database – dbStudentCourse. In this database, you should do the following work:

- Create three tables: tblStudent, tblCourse, and tblStudentCourse,
- Build the relationship between tblStudent and tblCourse,
- Create a query, and
- Generate a report based on the query results.

❖ You can follow the following procedures to accomplish your Project work. You will have to submit your work in email will not accept Access databases due to security risk.

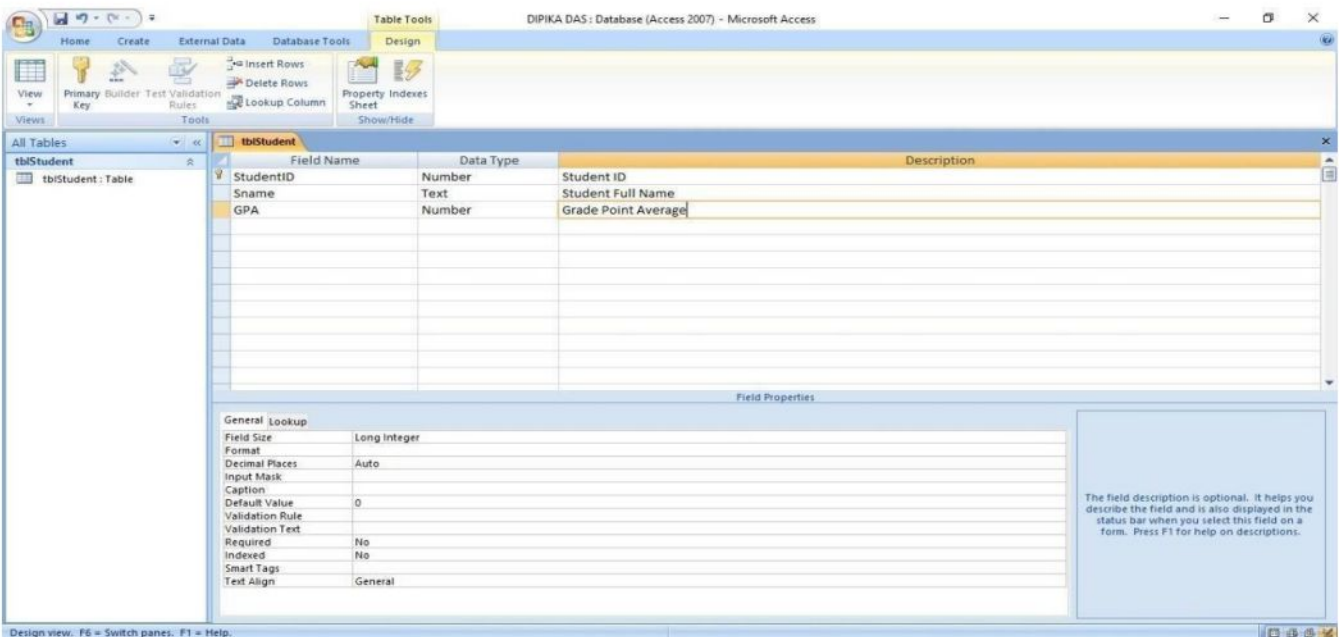
## ➤ Database Design

This database contains three tables: tblStudent, tblCourse, and tblStudentCourse.

tblStudent(StudentID, Sname, GPA)

tblCourse(CourseID, CourseTitle, CreditHour, Description)

tblStudentCourse(StudentID, CourseID, DateTaken, Status)



# Using MS Access to Create a Database

Open Microsoft Access 2013, and click “Blank Database”. You need to name your database as

“dbStudent.accdb” and save it into a location that you will remember. Click “Create”.

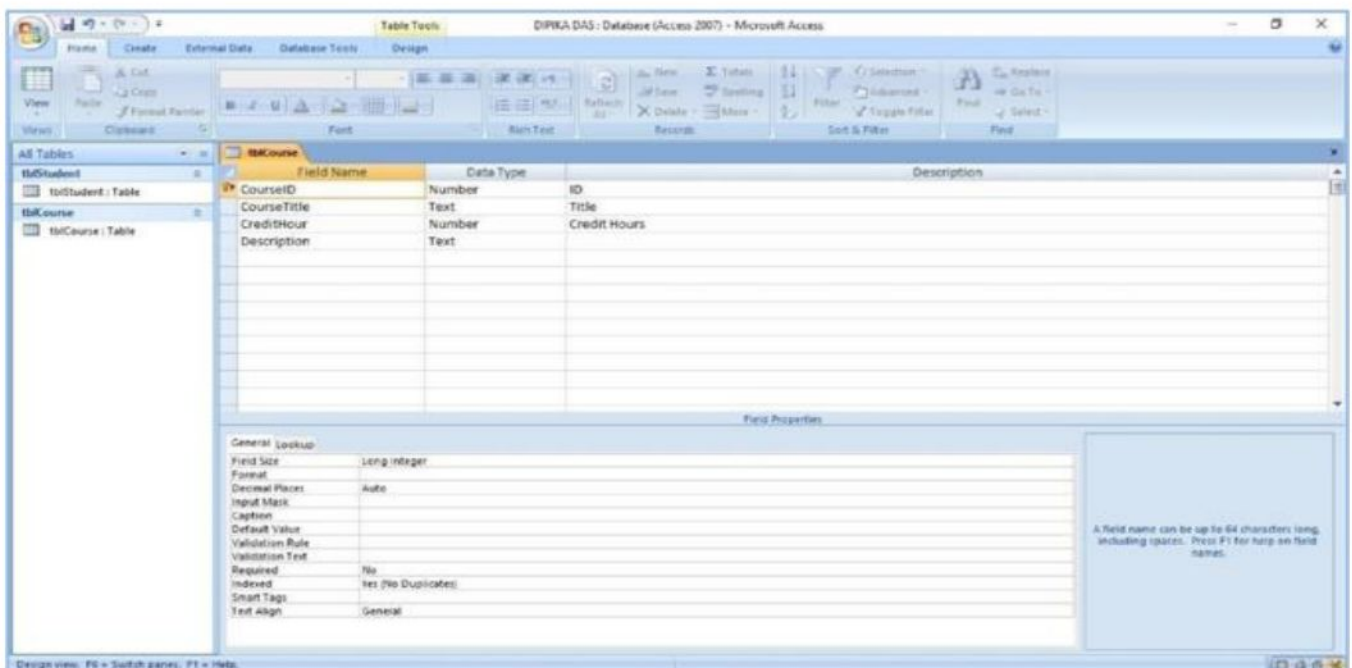
In the database, you will see “Table1”, which is the default name created by Access. The datasheet view of “Table1” is on the right hand side of the database. Right click “Table1” on the top of the datasheet view and choose “Design View”. In the pop up window, rename the table as “tblStudent”.

Input the field name and choose the data type as shown in Figure 1 above. Set the first field “StudentID” as the “primary key” by right clicking the very beginning of the first row. Now, the design of the table “tblStudent” is completed. To create other two tables “tblCourse” and “tblStudentCourse”, go to the top menu and click

“Create” and then “Table”, you will see a new table named “Table1”. Repeat the procedures of b) and input the field names and data types as indicated in Figure 2 and 3.

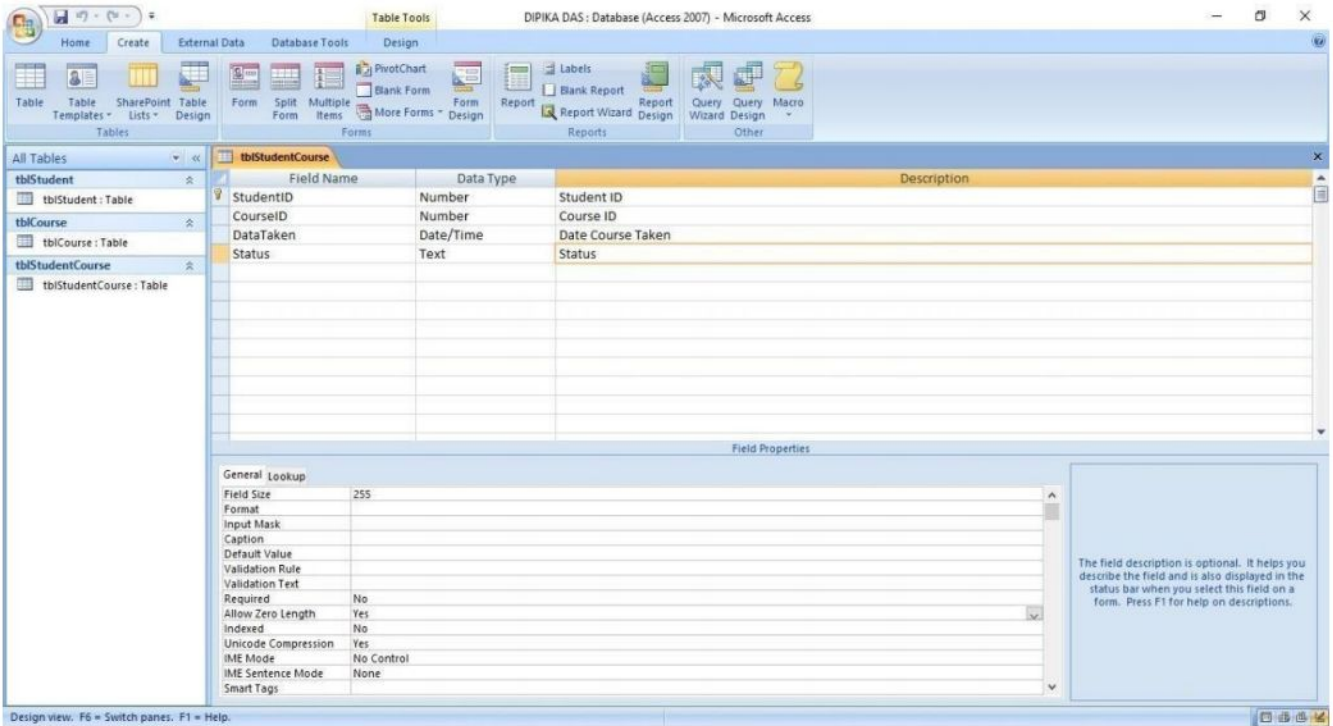
Save your work by close all Table item windows

Input the data as indicated in Figure 4a, 4b, and 4c.

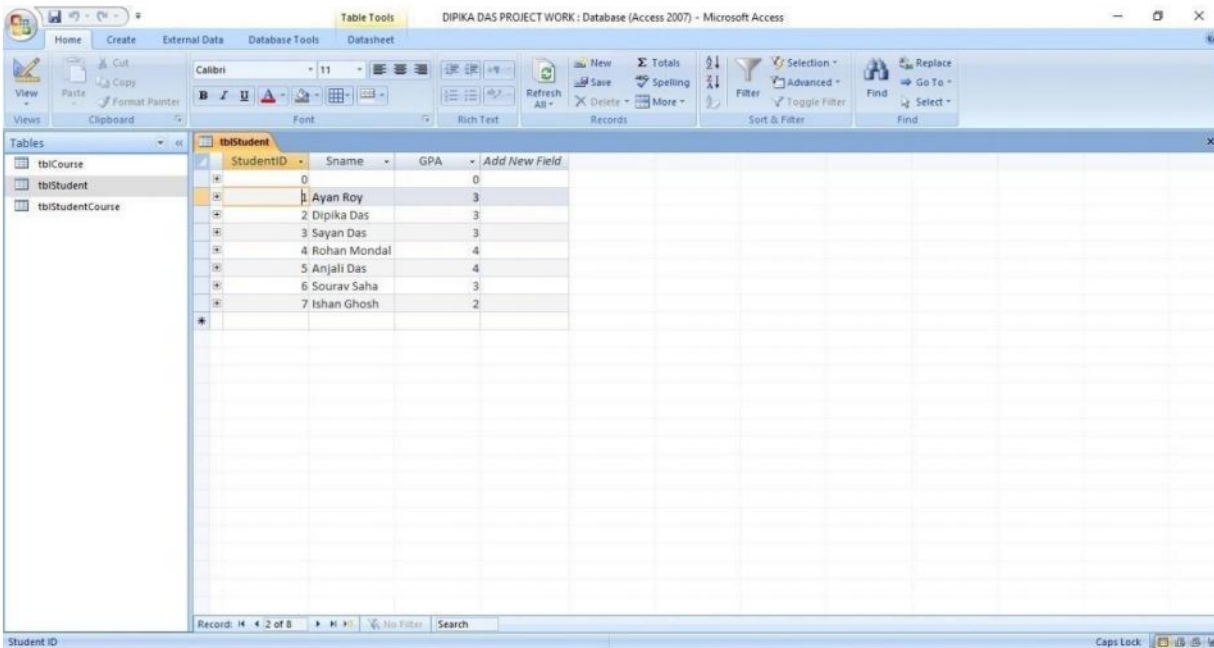




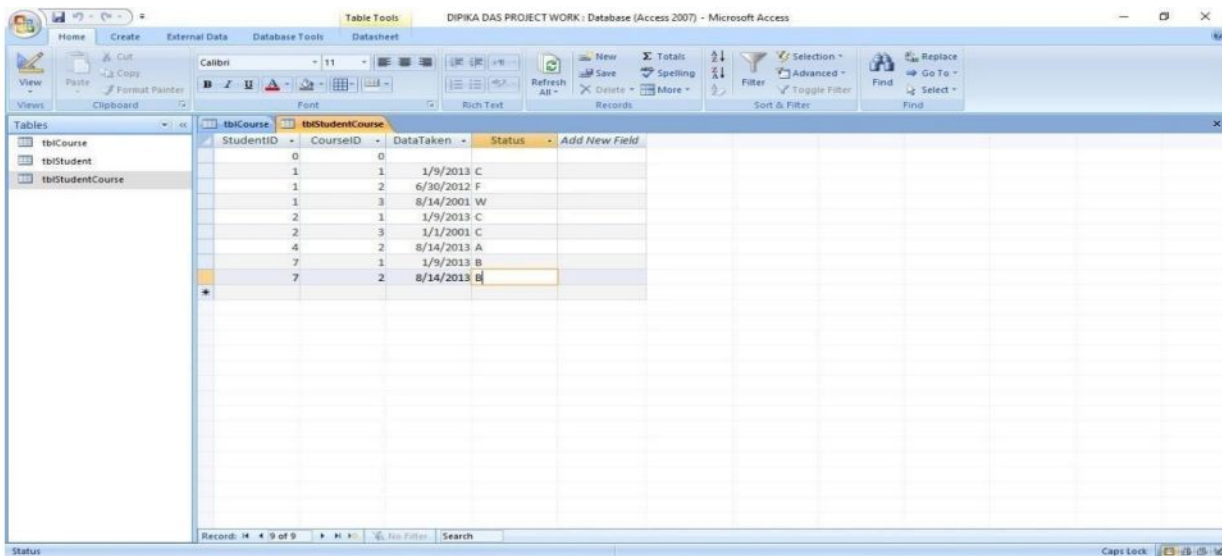
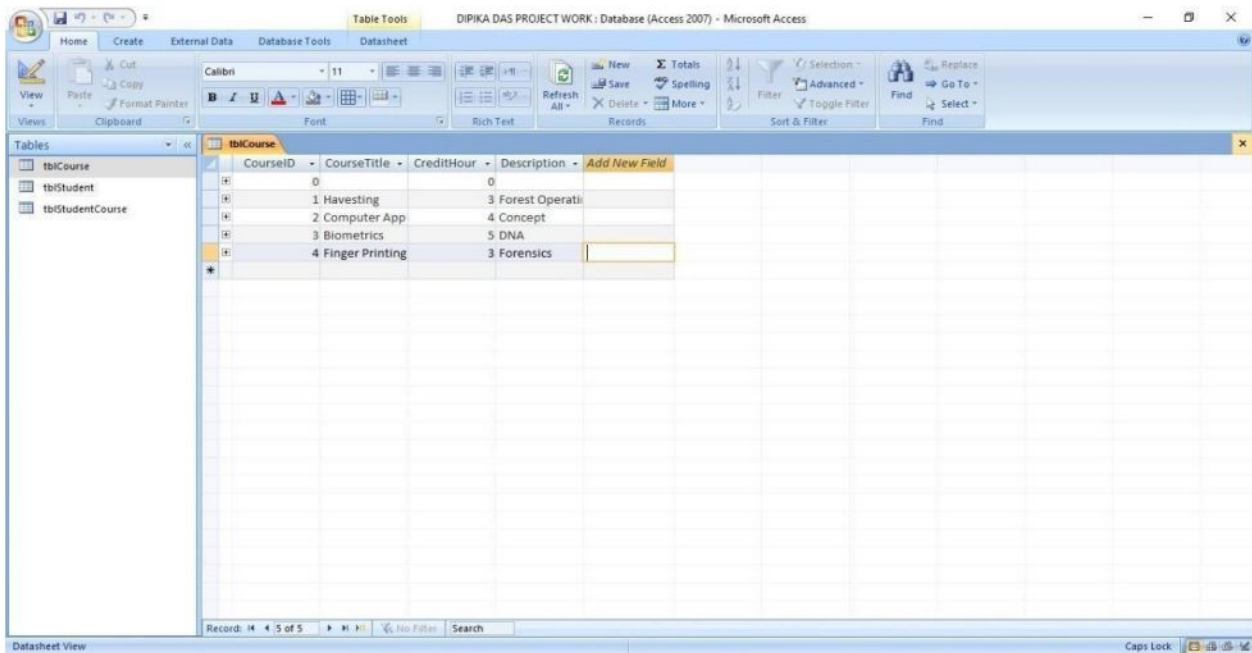
# Using MS Access to Create a Database



## The frame of tblstudent course



# Using MS Access to Create a Database

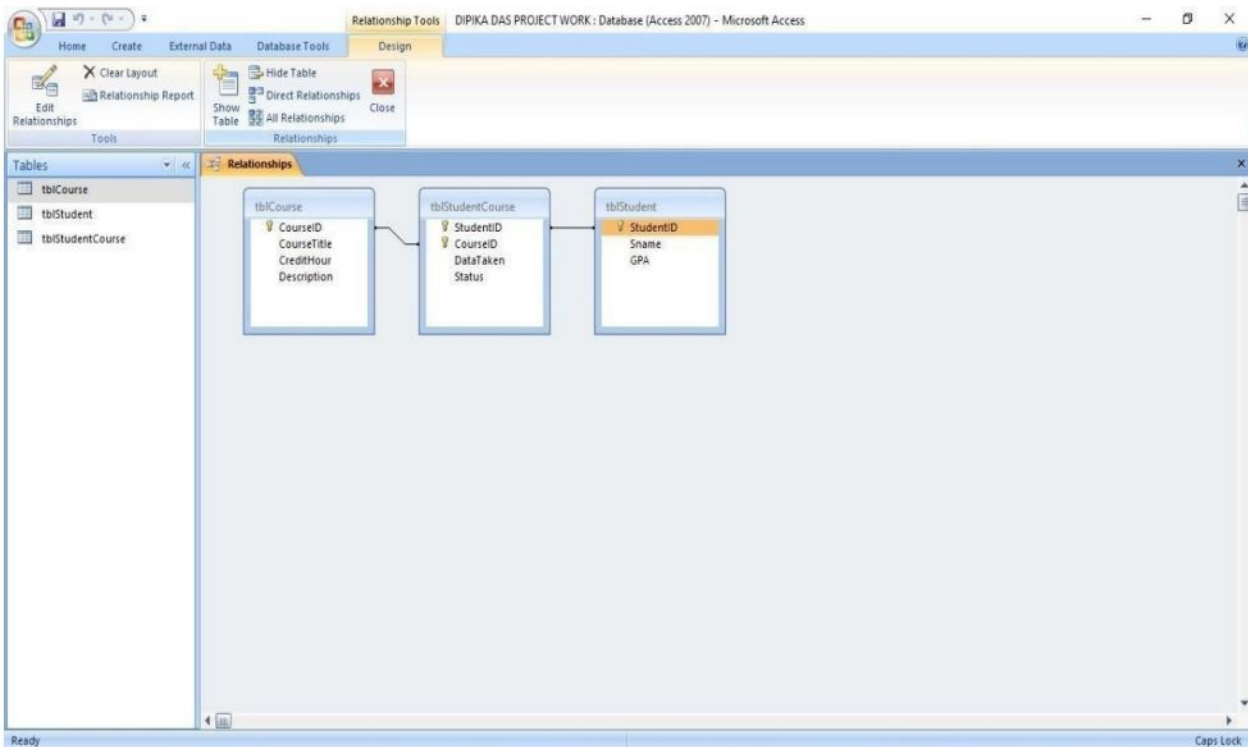


❖ Build relationship for Student and course database

Click Database Tools-> Relationships... from the Tool menu, you will see a dialogue box.

Select all the tables and hit the button "Add". Simply drag CourseID from

# Using MS Access to Create a Database



tblCourse to tblStudent Course and StudentID from tblStudent to tblStudent Course.

The relationships among the tables are built .

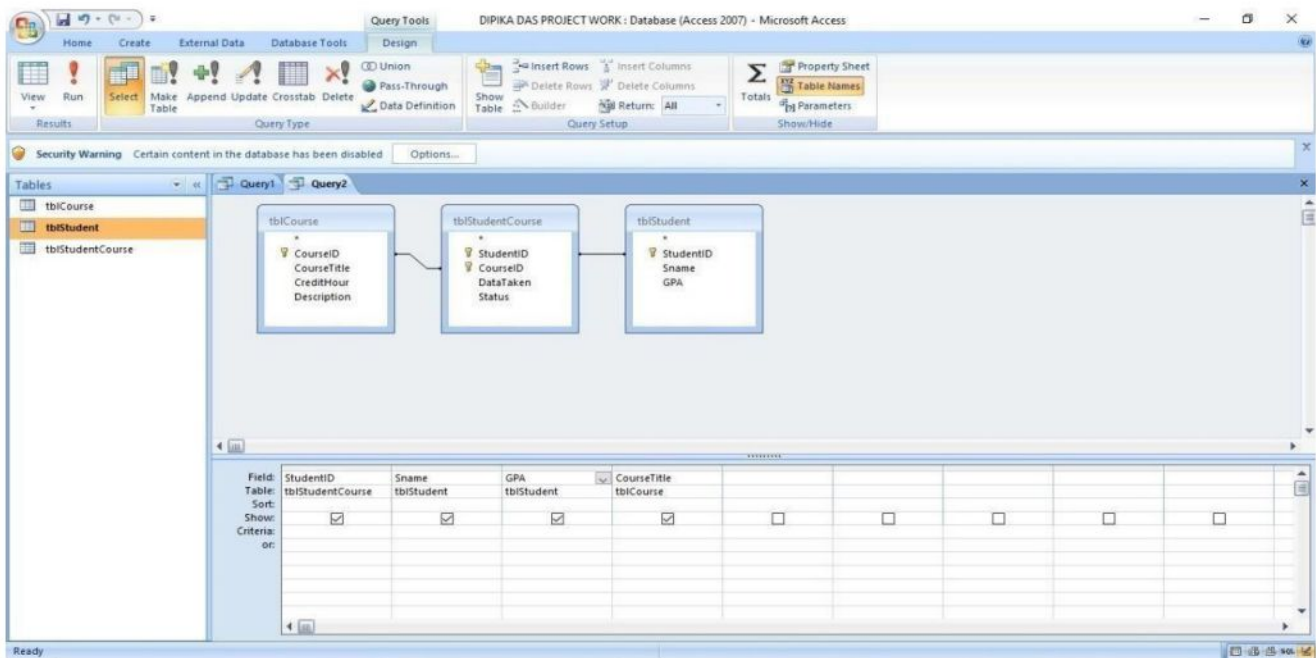
# Using MS Access to Create a Database

## ❖ Query Tables

### ➤ Query Manually

Click “Create” menu, you will see several options to create a query. We will use “Query design”. When the “Show Table” box is popped up, add all the tables.

Drag the data fields you need from tables to the query layout area where the tables are shown. Click “Run”, you will get a query table. In your assignment, you list StudentID, SName, GPA, and CourseTitle; and name your query as qryStudentCourse.



## ❖ Create reports

Figure 6.

Click “Create” on the menu and then “Report Wizards”.

Select the query you just generated and select all the fields.

Follow the instructions to create your own report based on the query you just created:

rptStudentCourse.

# BIBLIOGRAPHY

The information for this project is taken from various resources which are given below:

- [www.google.com](http://www.google.com)
- [www.wikipedia.com](http://www.wikipedia.com)
- [www.pinterest.com](http://www.pinterest.com)
- **Patrick O'Neil and Elizabeth O'Neil, *Database Principles, Programming and Performance*, Harcourt Asia Pte. Ltd., First Edition, 2001.**